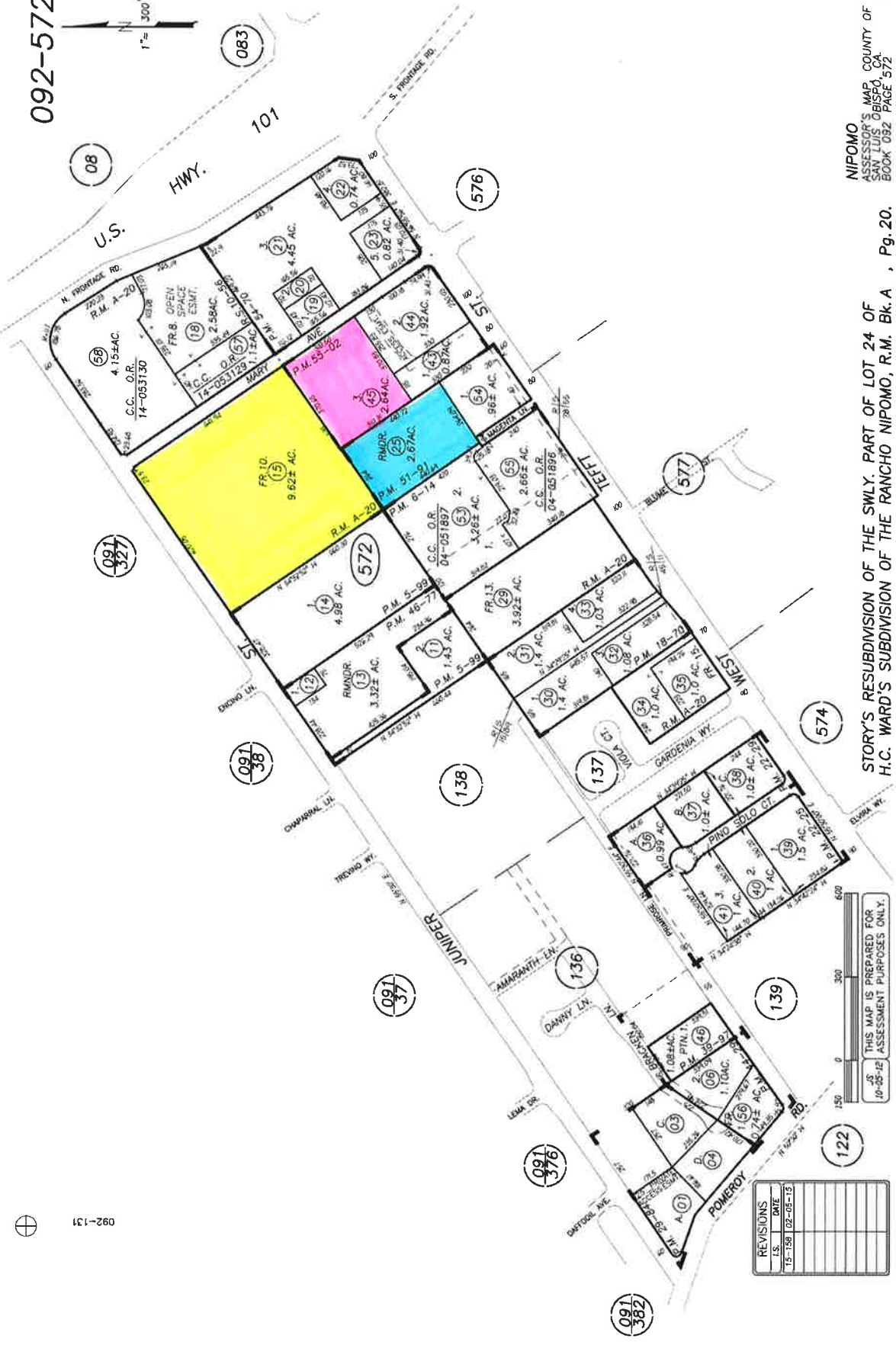


092-572



092-131

REVISIONS	DATE
15-158	02-05-13

THIS MAP IS PREPARED FOR 90-95-1E ASSESSMENT PURPOSES ONLY.

NIPOMO ASSESSOR'S MAP COUNTY OF SAN LUIS OBISPO, CA BOOK 082 PAGE 572

STORY'S RESUBDIVISION OF THE SWLY. PART OF LOT 24 OF H.C. WARD'S SUBDIVISION OF THE RANCHO NIPOMO, R.M. Bk. A , Pg. 20.